



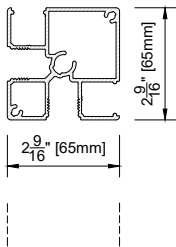
Corner Post KESP2C6565EF (Stock Item)

SPECIFICATIONS

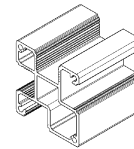
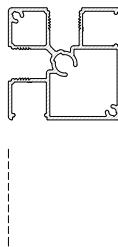
Imperial Size: 2 9/16" x 2 9/16" x 18' 6"
 Metric Size: 65mm x 65mm x 5650mm
 Material: 6063 T6 Aluminum
 Finish: Powdercoat w/Sublimated Woodgrain
 Weight / Piece: 24.25 lbs / 11 kg
 Weight / LF: 1.31 lbs/ft / 0.6 kg
 Case Quantity: 20
 Uses: Fence Post, Ideal Spacing @ 6'
 For use on Fence & Screen Systems

FEATURES

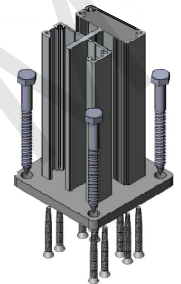
Holds Fence Slat
 Can be Installed in Concrete Footing, Core Drilled into Concrete, Surface Mounted (capabilities diminished)
 Provides Channel to Receive Slats KES150/100/65/38
 Provides Channel to Conceal Slat Fasteners Capped with Small Infill KESINFS
 38 Woodgrain Colors
 70+ Solid and Custom



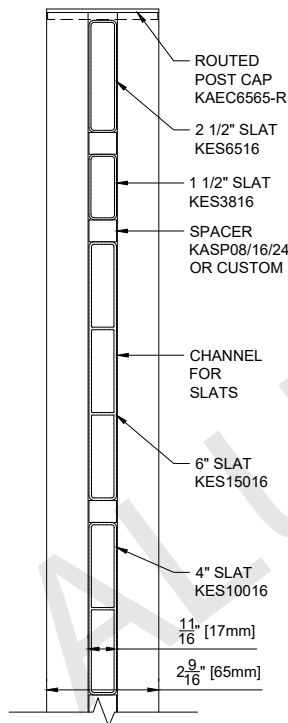
CORNER POST
 KESP2C6565EF
 2 9/16" x 2 9/16" x 18' 6"
 65mm x 65mm x 5650mm
 PLAN VIEW



CORNER POST
 KESP2C6565EF
 2 9/16" x 2 9/16" x 18' 6"
 65mm x 65mm x 5650mm
 ISOMETRIC
 For More Info @ ALUMARCH.COM
 888 589 9771

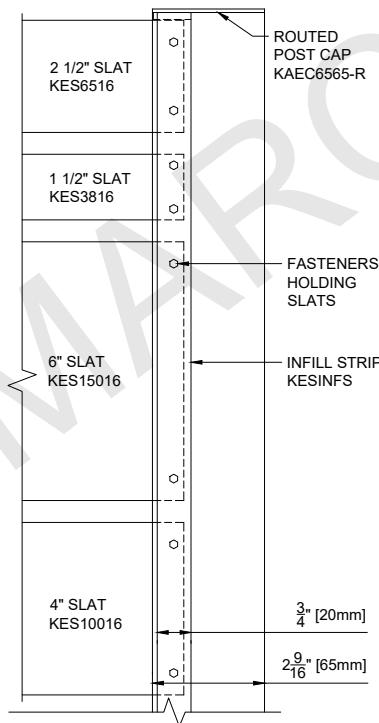


SURFACE MOUNTED PLATE
 IN CONCRETE SLAB

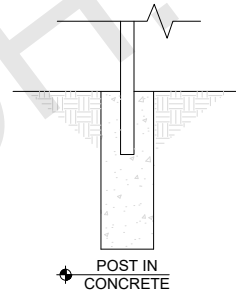


CORNER POST
 KESP2C6565EF
 SIDE SLAT VIEW

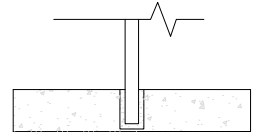
More Info @ ALUMARCH.COM
 888 589 9771



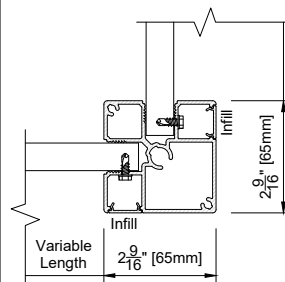
CORNER POST
 KESP2C6565EF
 SIDE FASTENER VIEW



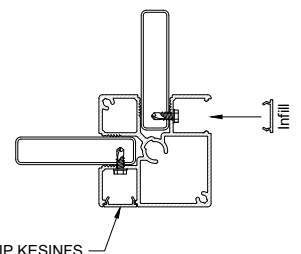
POST IN
 CONCRETE



POST CORE-DRILLED
 IN CONCRETE SLAB



CORNER POST
 KESP2C6565EF
 GENERAL ASSEMBLY
 HORIZONTAL SLATS



CORNER POST
 KESP2C6565EF
 GENERAL ASSEMBLY
 VERTICAL SLATS

*NOTE:
 ALL SLAT FASTENERS EPOXY COATED / SS / GALVANIZED
 NON-CORROSIVE #10 - 1/2" - 5/8" SELF-DRILLING