



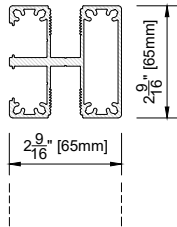
2 Way Post KESP2W6565 (Stock Item)

SPECIFICATIONS

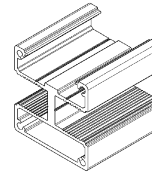
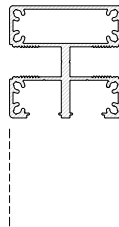
Imperial Size: 2 9/16" x 2 9/16" x 18' 6"
 Metric Size: 65mm x 65mm x 5650mm
 Material: 6063 T6 Aluminum
 Finish: Powdercoat w/Sublimated Woodgrain
 Weight / Piece: 30.86 lbs / 14 kg
 Weight / LF: 1.67 lbs/ft / 0.76 kg
 Case Quantity: 20
 Uses: Fence Post
 For use on Fence & Screen Systems

FEATURES

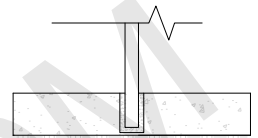
Holds Fence Slat
 Can be Installed in Concrete Footing, Core Drilled into Concrete, Surface Mounted (Capabilities Diminished)
 Provides Channel to Receive Slats KES 150/100/65/38
 Provides Channel to Conceal Slat Fasteners Capped with Small Infill KESINFS
 38 Woodgrain Colors
 70+ Solid and Custom
 Ideally Spaced @ 6'



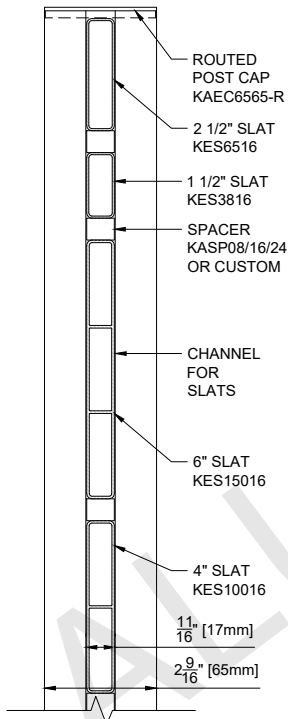
2 WAY POST
 KESP2W6565
 2 9/16" x 2 9/16" x 18'6"
 65mm x 65mm x 5650mm
 PLAN VIEW



2 WAY POST
 KESP2W6565
 2 9/16" x 2 9/16" x 18'6"
 65mm x 65mm x 5650mm
 ISOMETRIC

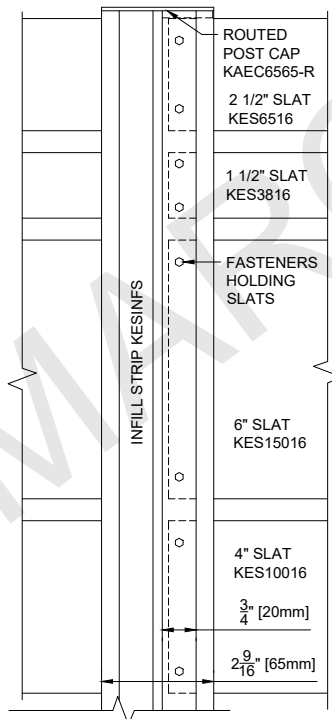


POST CORE-DRILLED
 IN CONCRETE SLAB



2 WAY POST
 KESP2W6565
 SIDE SLAT VIEW

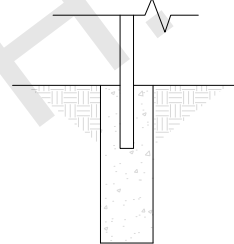
More Info @ ALUMARCH.COM
 888 589 9771



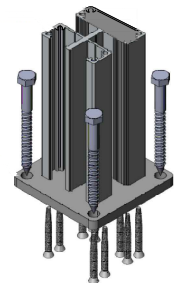
2 WAY POST
 KESP2W6565
 SIDE FASTENER VIEW

*NOTE:
 ALL SLAT FASTENERS EPOXY COATED / SS / GALVANIZED
 NON-CORROSIVE #10 - 1/2" - 5/8" SELF-DRILLING

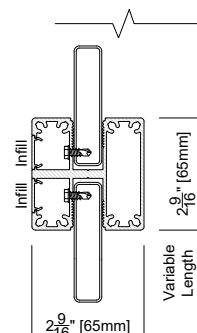
For More Info @ ALUMARCH.COM
 888 589 9771



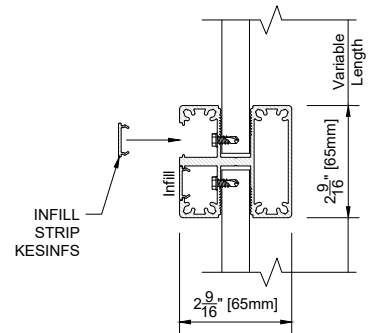
POST IN
 CONCRETE



SURFACE MOUNTED PLATE
 IN CONCRETE SLAB



2 WAY POST
 KESP2W6565
 GENERAL ASSEMBLY
 VERTICAL SLATS



2 WAY POST
 KESP2W6565
 GENERAL ASSEMBLY
 HORIZONTAL SLATS